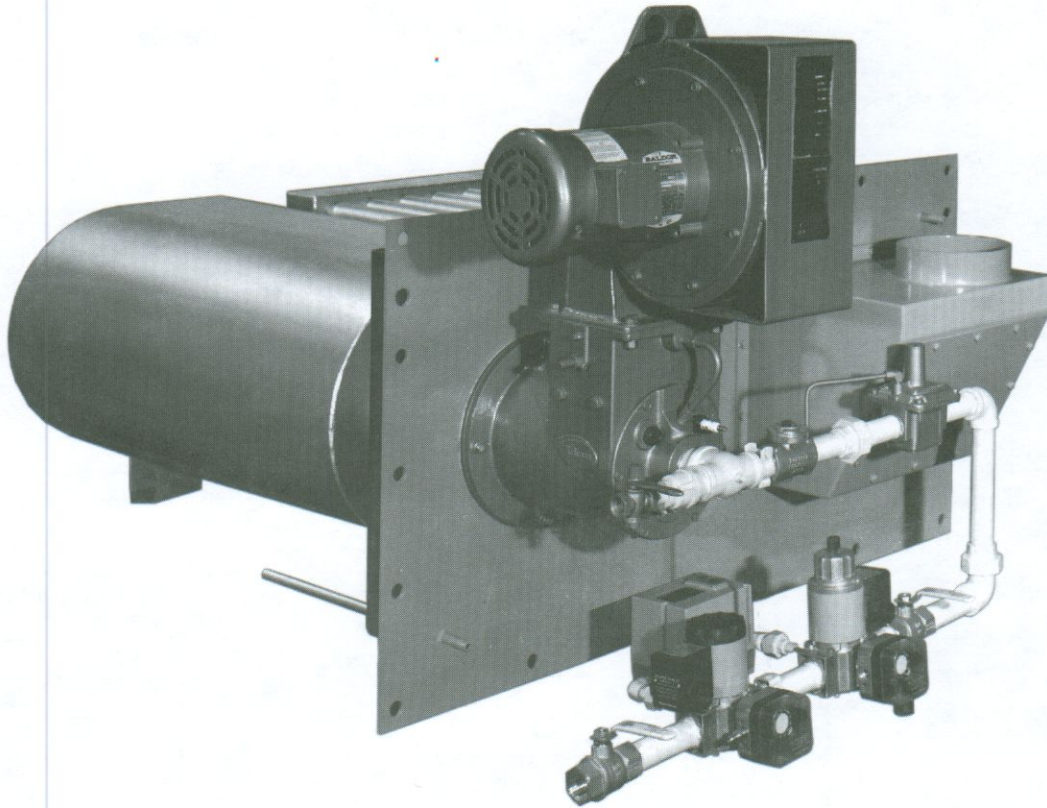


# ECLIPSE "RLT" & "RHT" INDIRECT AIR HEATING BURNERS

Spec 120  
6/94



Eclipse Recirculating Low Temperature (RLT) and Recirculating High Temperature (RHT) indirect air heating burners are designed to heat recirculating ovens and dryers where the products of combustion must be isolated from the process air stream. They are also excellent for use in industrial space heating systems. These burners feature an industry-proven burner, firing chamber and exhaust tubes assembled as a single unit for easy installation and optimum performance.

The burners can be mounted either on a side plate (as shown in the photo) or in a duct section for insertion into existing ductwork. Eclipse can supply all system components, including ignition, flame monitoring, and temperature control components, wired to a control panel as specified by the customer. Components can be selected and installed to satisfy local codes and approval agencies, virtually anywhere in the world.

For assistance in configuring indirect air heating burners, call your area Eclipse representative.

- Separates products of combustion from process air stream.
- Completely packaged for easy installation.
- Available as a side plate or duct unit.
- Outlet temperatures to 290°C (550°F); 80°C (150°F) maximum temperature rise per pass.
- High efficiencies from 60% to 75%.
- Low process air flow pressure drop.
- Low NOx in external exhaust stream.
- Meets NFPA 86 recommendations.
- System options include valve trains, control panels, and combustion air inlet filters.
- High temperature limit protection and process air flow switch provided as standard.
- Front access for easy maintenance.
- Free-floating design allows for thermal expansion.



**ECLIPSE COMBUSTION**

## Specifications

---

<b>Max. Outlet Temperature</b>	RLT: 120°C (250°F) RHT: 290°C (550°F)
<b>Max. Temp. Rise per Pass</b>	RLT: 67°C (120°F) RHT: 80°C (150°F)
<b>Fuels</b>	Natural gas, 100% propane or propane/air. Call Eclipse for information on using other fuels, such as #2 oil.
<b>Ignition</b>	Integral spark-ignited pilot.
<b>Flame Monitoring</b>	Flame rod supplied. U.V. scanner adaptors are available.
<b>Packaging Options</b>	Available with valve trains, control panels, and combustion air inlet filters. Heaters can be supplied mounted on side plates or duct sections as specified by the customer. Call Eclipse for information on custom packaged systems.
<b>For More Information</b>	RLT: Data 120-1, dimensions & specifications. RHT: Data 120-2, dimensions & specifications.

## Performance Summary

---

Based on a process stream differential pressure of 3 mbar (1.2"w.c.) across the heater; air flows are based on 50°C (90°F) air temperature rise.

Model RHT/RLT	Nominal Output		Nominal Air Flow		Min. Gas Inlet Press.	
	kW	K Btu/hr.	nm <sup>3</sup> /s.	SCFM	mbar	"w.c.
50	50	188	0.84	1,800	17	7
100	100	375	1.62	3,600	20	8
200	200	750	3.24	7,300	27	11
300	300	1,125	4.86	10,900	40	16
400	400	1,500	6.48	14,500	30	12
500	500	1,875	8.10	18,100	30	12
600	600	2,250	9.72	21,800	42	17
700	700	2,625	11.34	25,400	35	14
800	800	3,000	12.96	29,000	35	14



**ECLIPSE COMBUSTION**



**Offered By:**

Power Equipment Company  
2011 Williamsburg Road  
Richmond, Virginia 23231  
Phone (804) 236-3800  
Fax (804) 236-3882

---

[www.peconet.com](http://www.peconet.com)